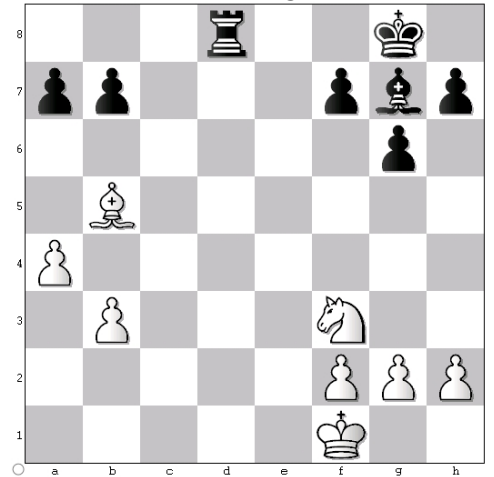


# Chess Checklist Part 1

## Material Balance

- Relative piece values:  
Pawn=1; Knight=3; Bishop=3; Rook=5; Queen=9
- Knight vs. bishop, advantages and disadvantages
- What is sufficient material for checkmate?
- Terms to know: “the Exchange”, bishop pair, bad bishop

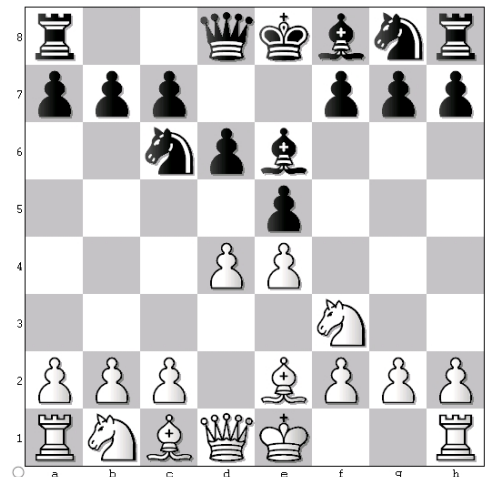
Who has an advantage in material?



## Basic Tactics

- Fork
- Pin
- Skewer
- Double attack
- Discovered attack
- Deflection
- Removing the guard

White to move



## Basic Checkmates

- Bank rank mate
- Mating with two queens
- Mating with two rooks
- Mating with one queen
- Mating with one rook

White to move

